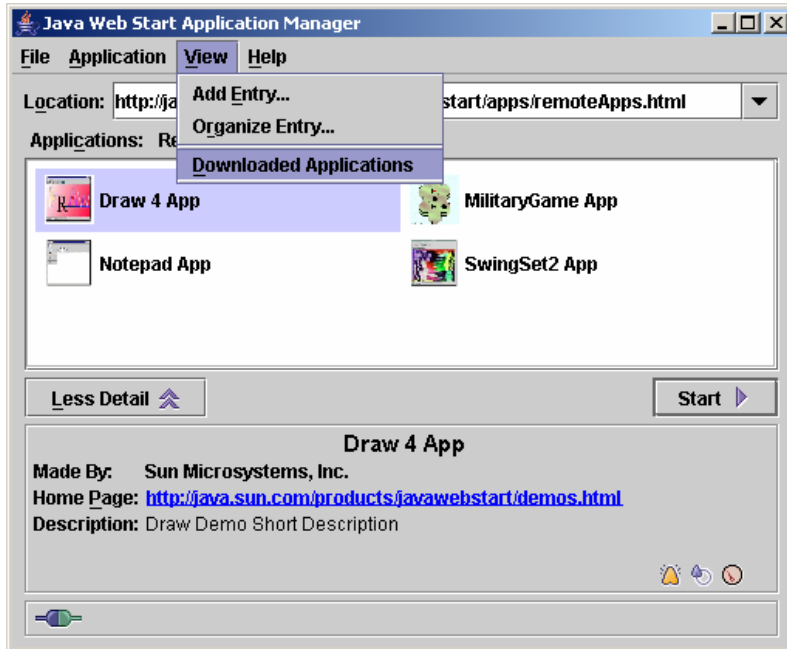


Instructions to put an icon on your desktop...

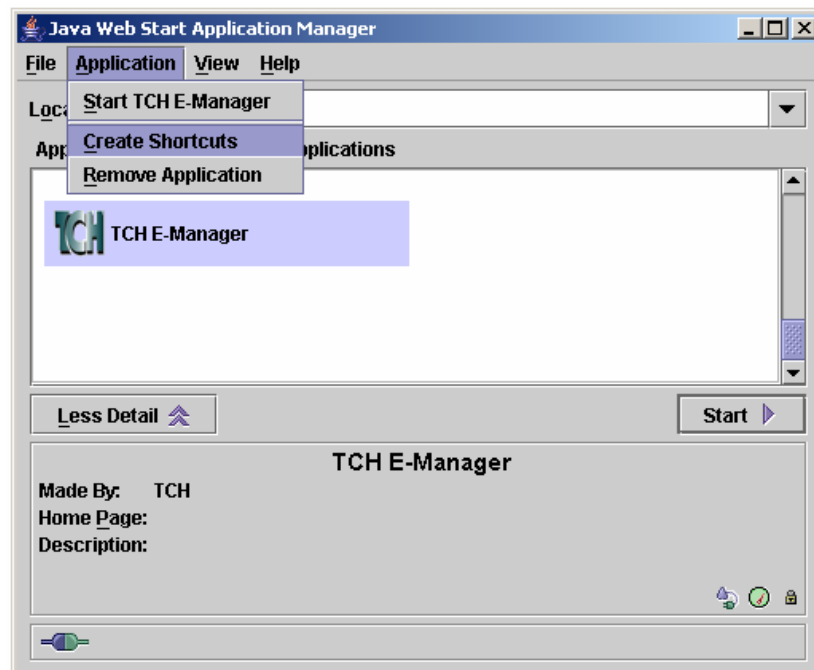


Go to your icon on your desktop that says: Java Web Start

It will bring up an application manager. It **might** come up with some programs that look like this: If it does, go to “View” and click on “Downloaded Applications.”



That should show you the E-manager icon. If you see it, then click on it once to highlight it in purple. Then go to Application and click on create shortcuts.



You should now have an icon on your desktop that says TCH E-manager

